

Granite Construction:  
ADA Curb Ramp Schedule:  
Week of Oct. 7-14, 2022:

*Schedule Subject to Change*

Next week, demolish, dorm and pours scheduled at:

- Siskiyou Blvd. at Tolman Creek, SE corner →
- Siskiyou Blvd. at Glendale NE corner
- North Main east of Water Street in front of Ashland Police Dept. substation
- East Main at Oak, curb ramp from Bowmer Theater walkway
- Siskiyou Blvd. at Faith, NE corner
- Siskiyou Blvd at Normal, NE corner





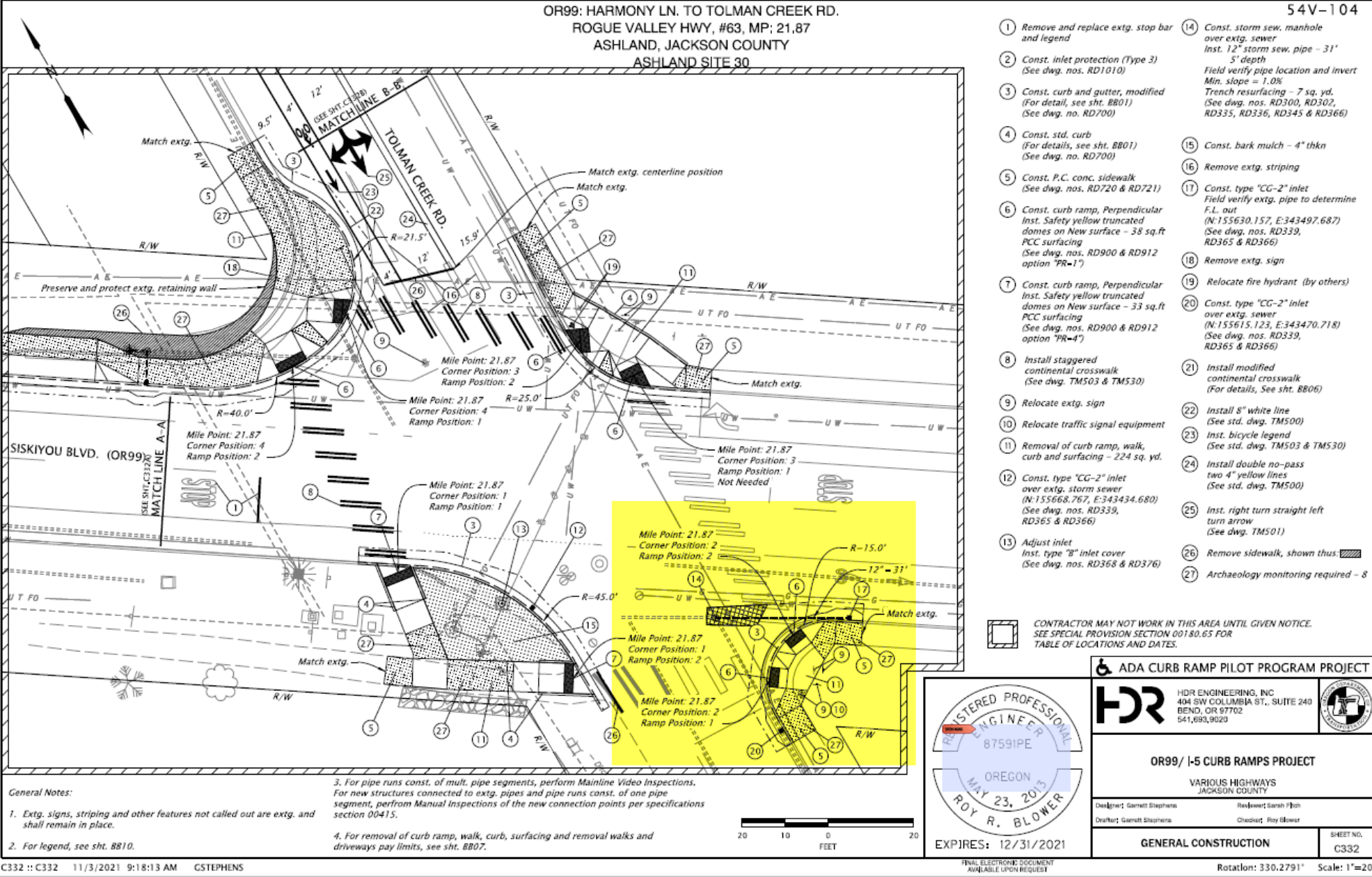
Tolman Creek and  
Siskiyou Blvd.,  
southeast corner





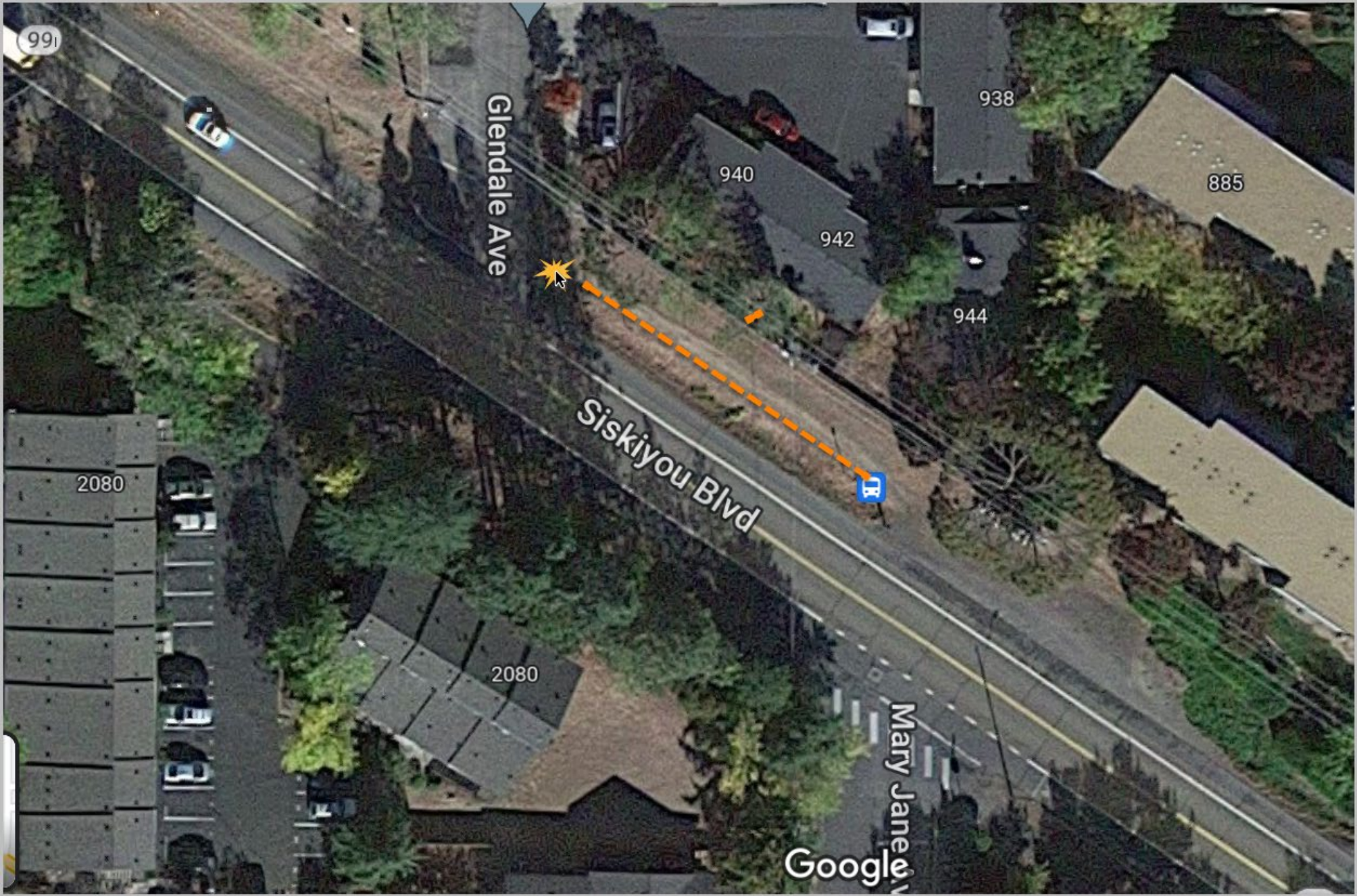
Siskiyou Blvd. at  
Tolman Creek  
Road, southeast  
corner

When  
complete, each  
leg of this  
intersection will  
have improved  
curb ramps and  
continental  
crosswalk.



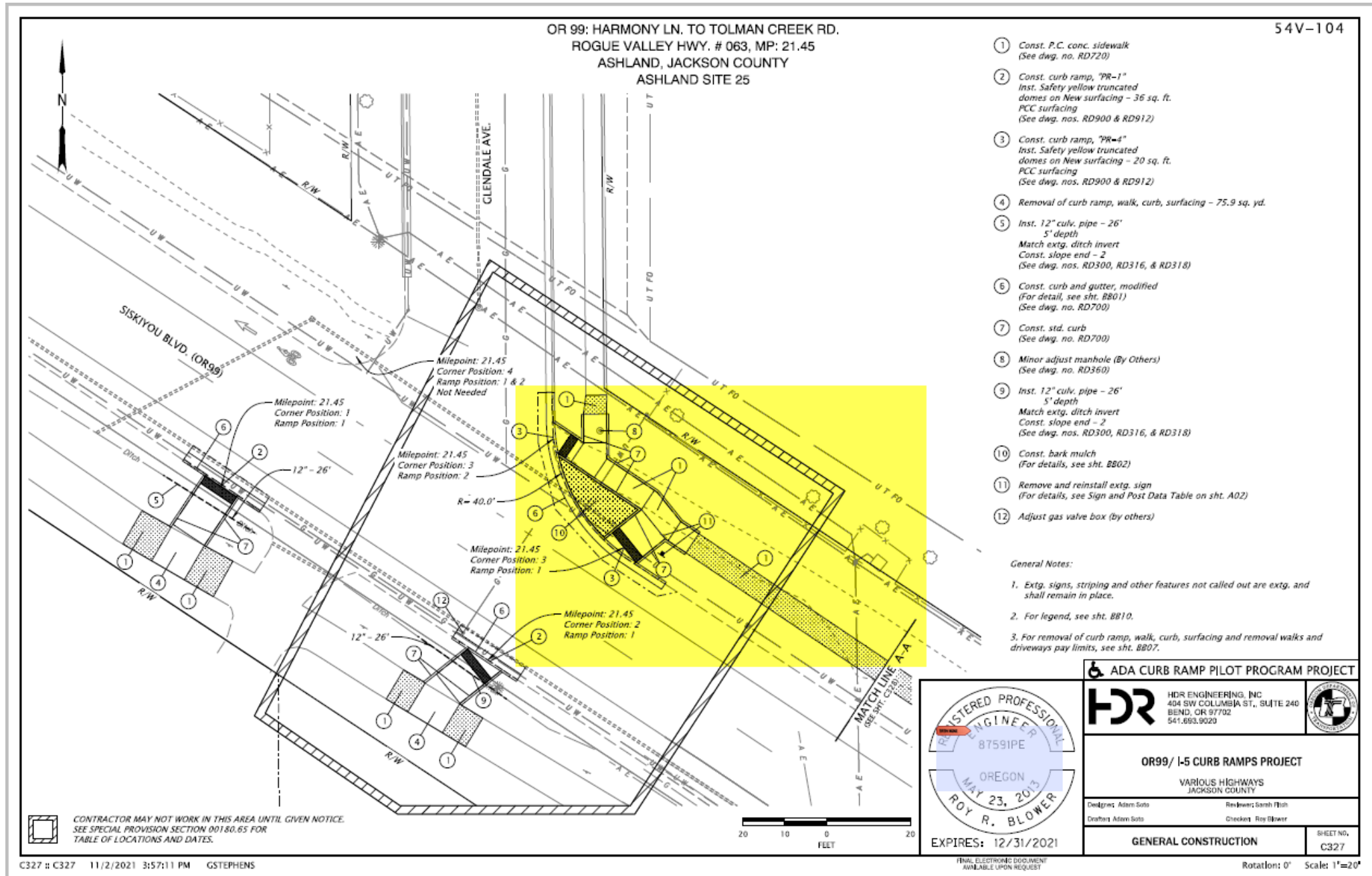


Siskiyou and  
Glendale, NE  
corner curb ramp  
and sidewalk  
extension



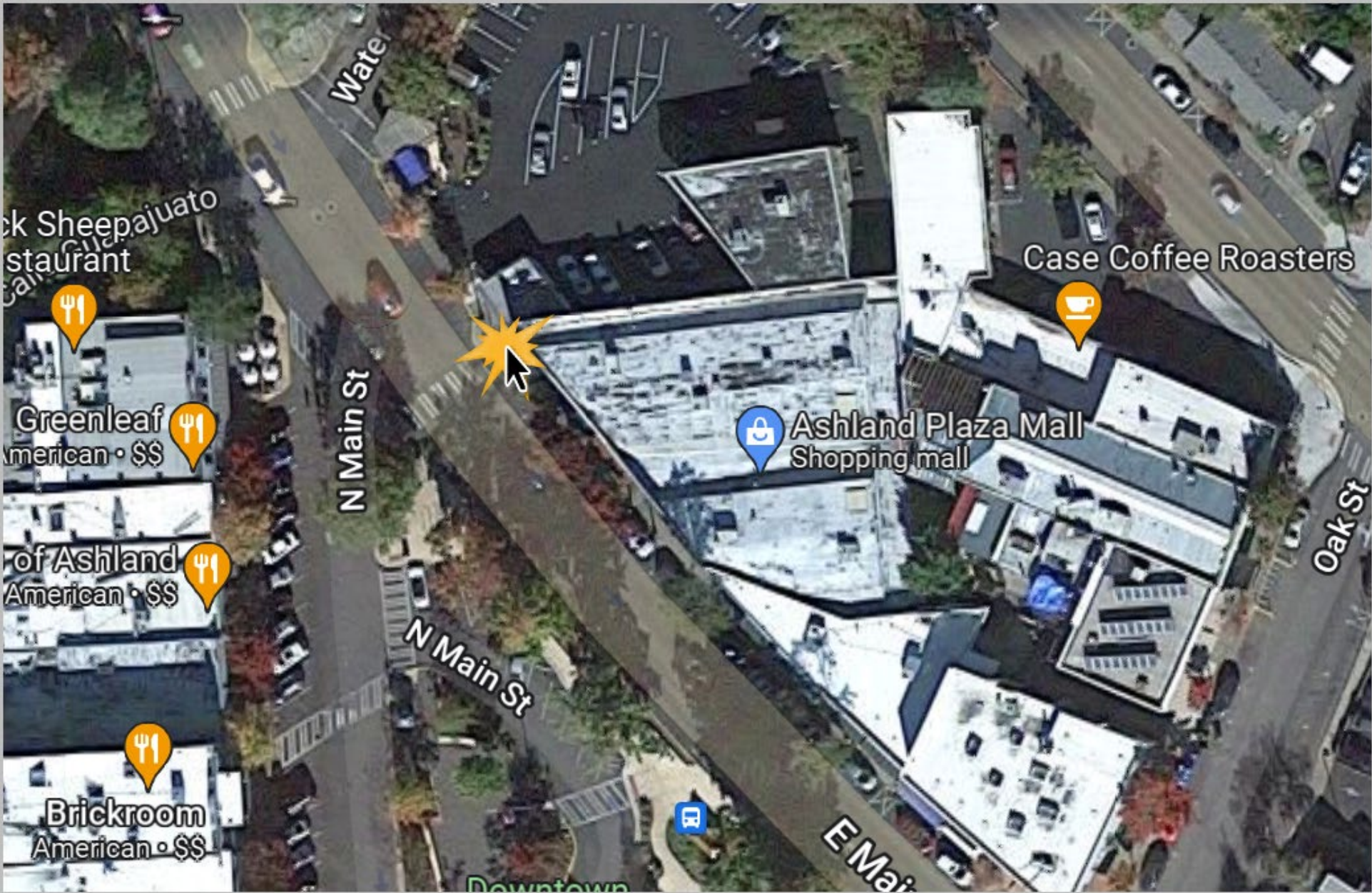


Siskiyou and  
Glendale, NE  
corner curb ramp  
with new sidewalk  
extension



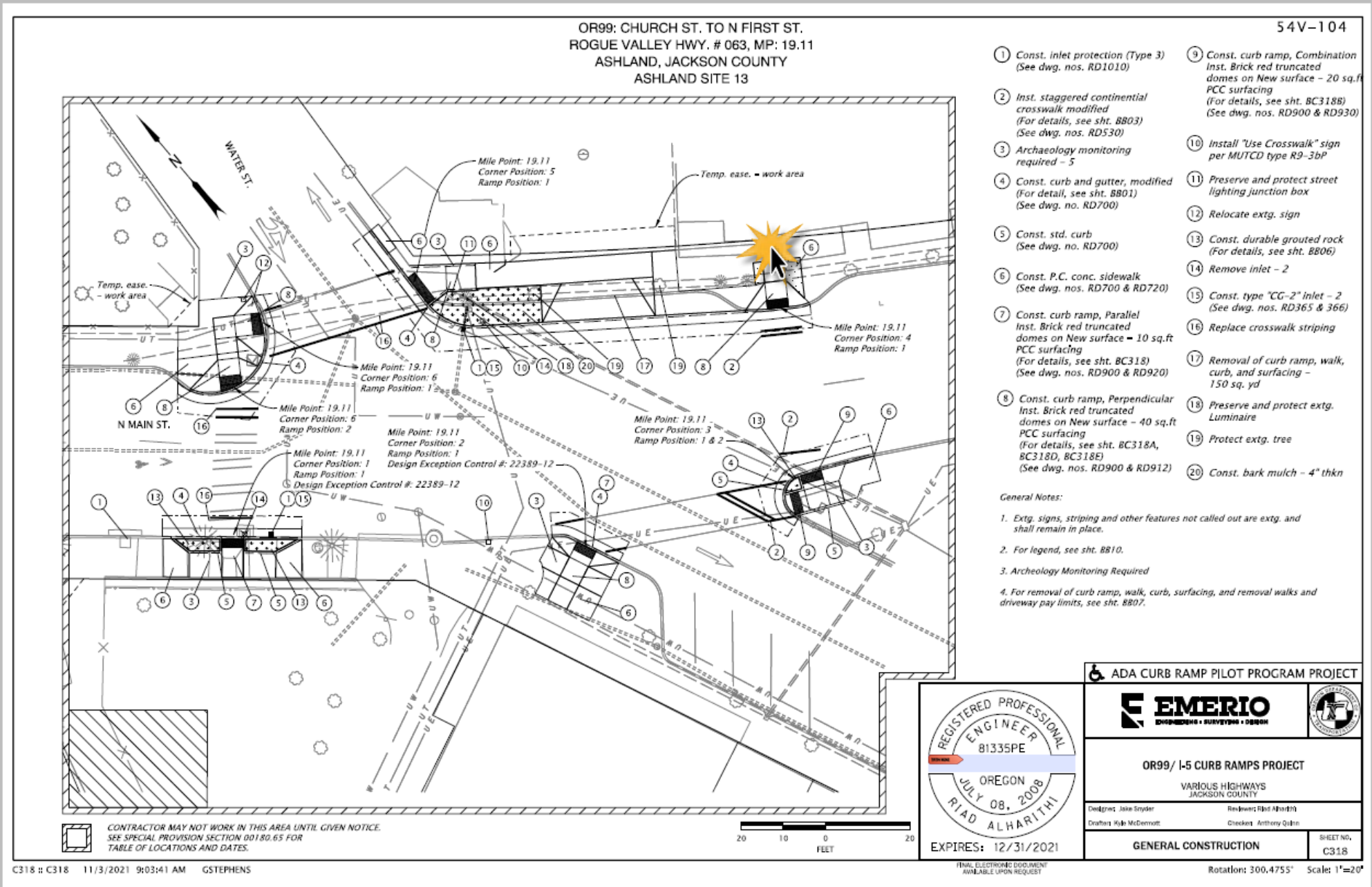


North Main Street, East of Water Street, in front of the Ashland Police substation



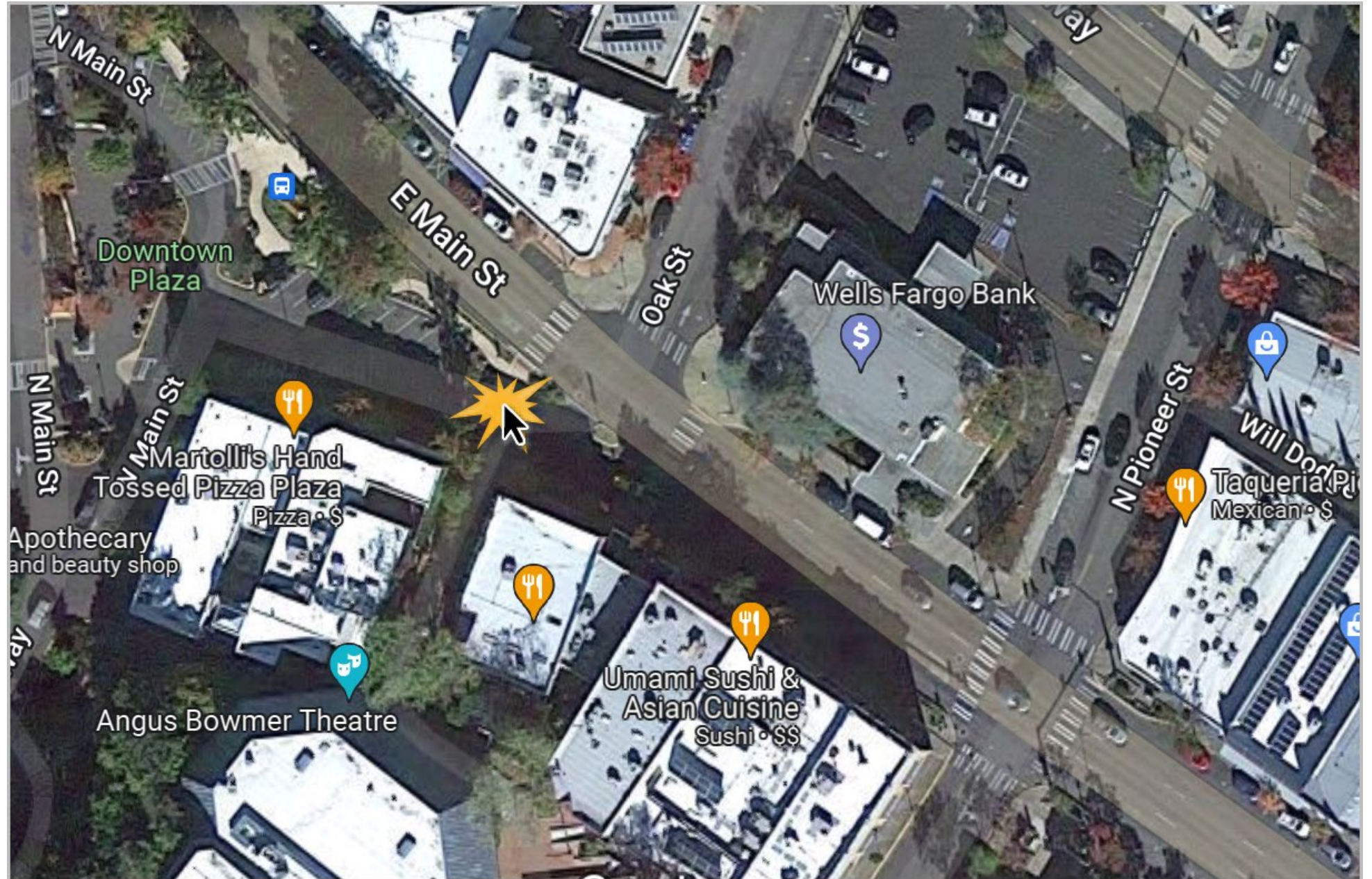


North Main Street, East  
of Water Street, in front  
of the Ashland Police  
substation



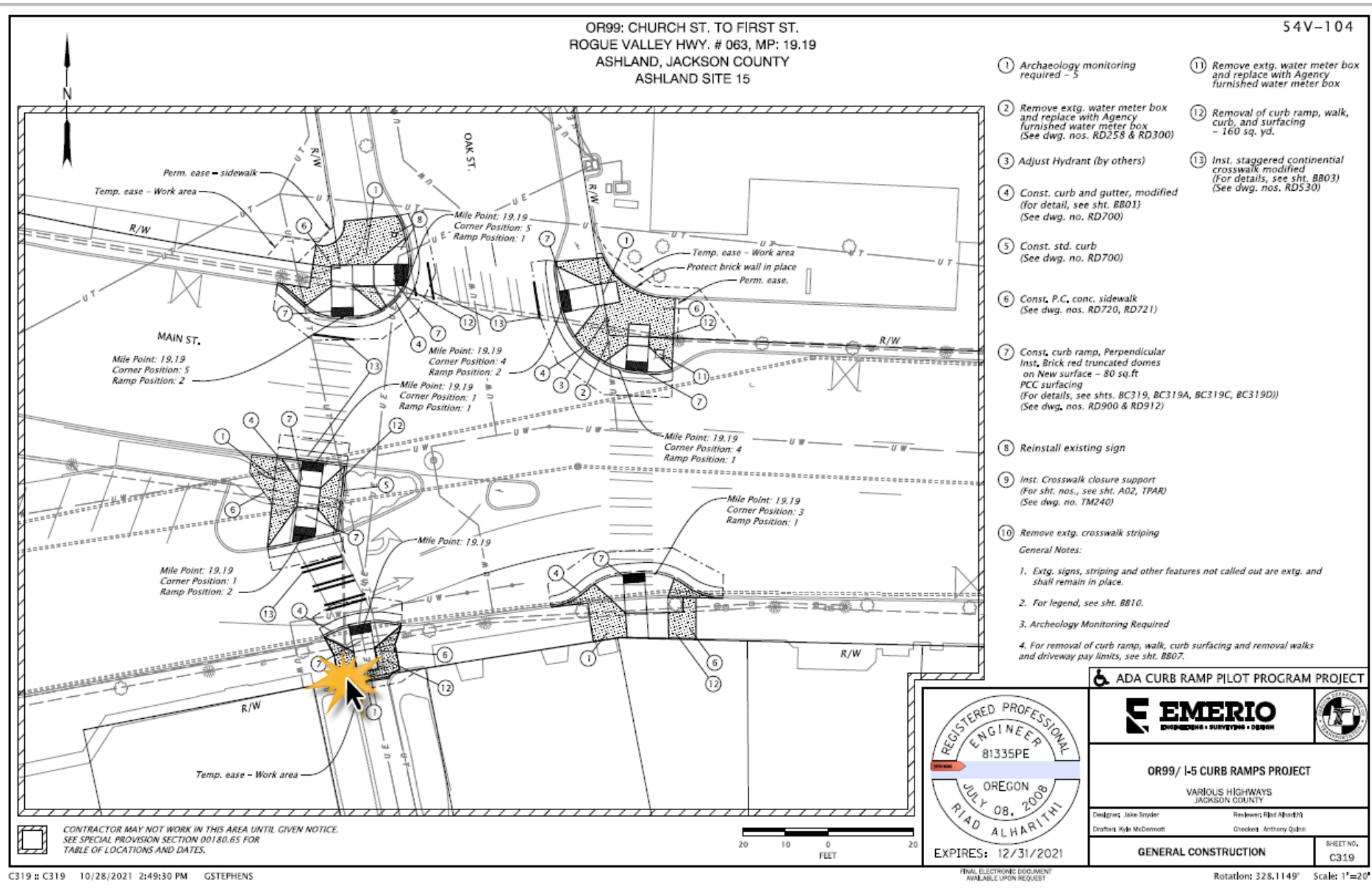


East Main Street  
curb ramp from the  
Angus Bowmer  
Theater upper  
walkway



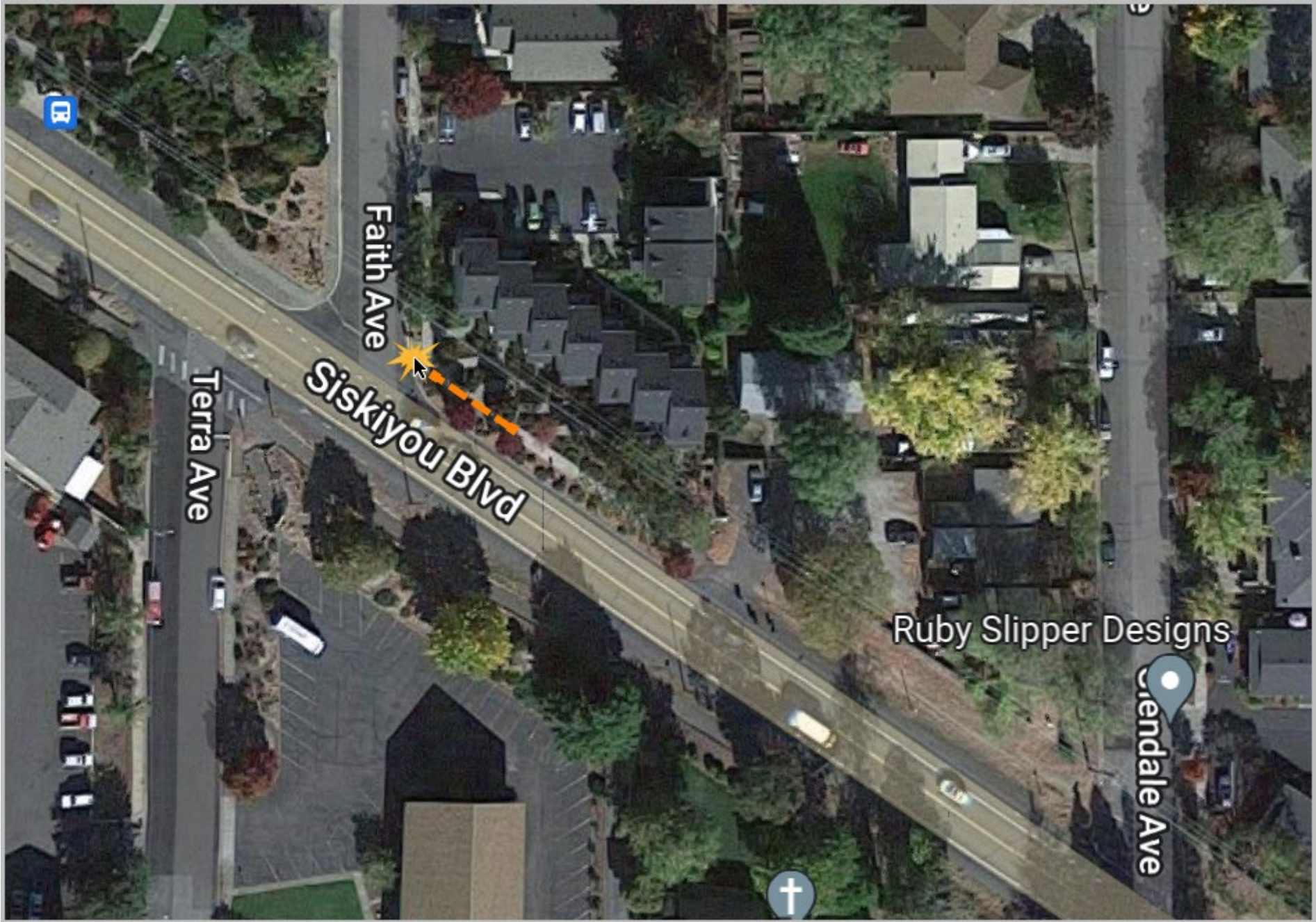


East Main Street  
curb ramp from the  
Angus Bowmer  
Theater upper  
walkway



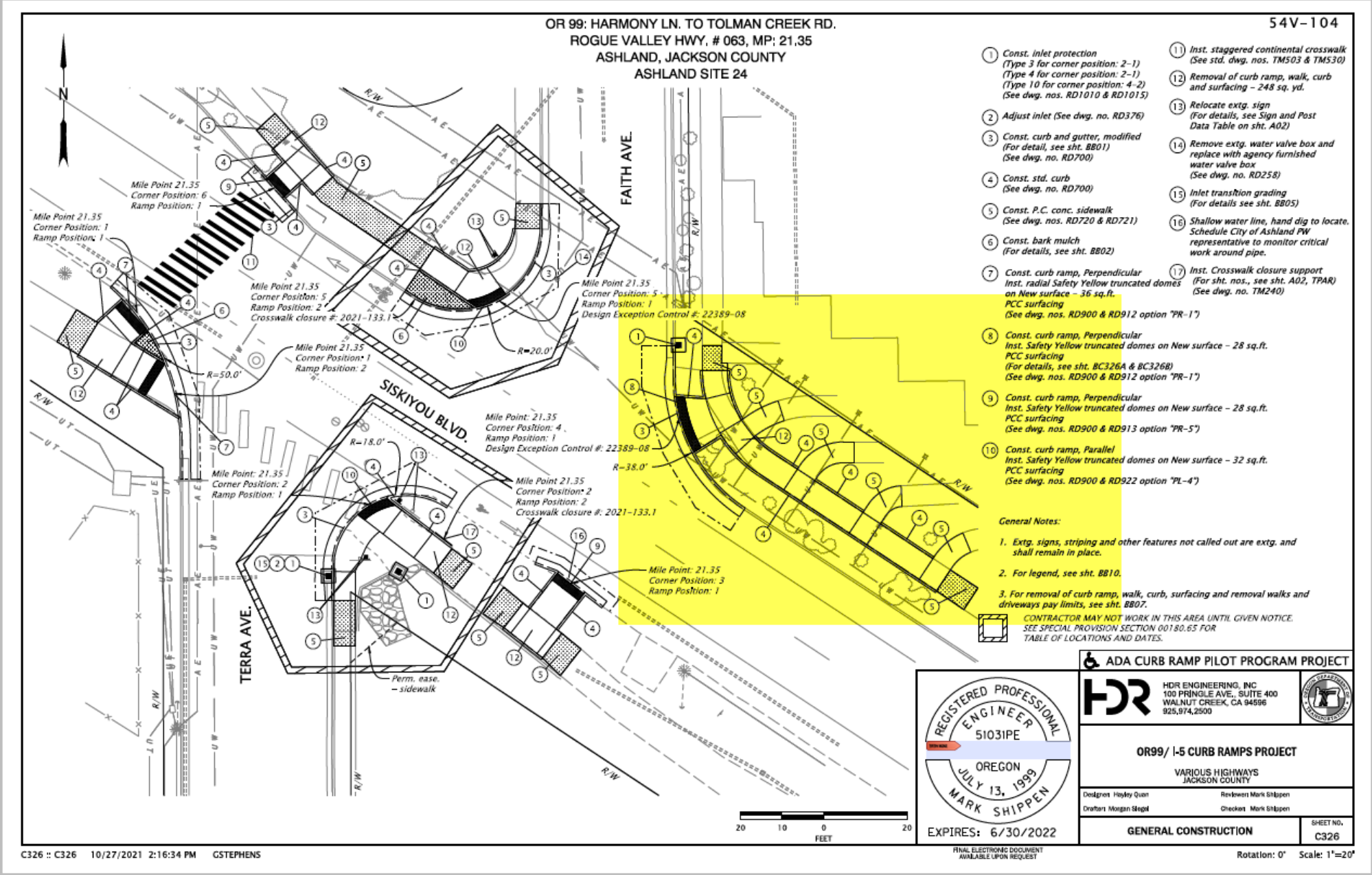


Siskiyou Blvd. and Faith Street, NE corner with sidewalk adjustment for elevation.





Siskiyou Blvd. and Faith Street, NE corner with sidewalk adjustment for elevation.





Siskiyou Blvd. at  
Normal Ave., NE  
corner





Siskiyou Blvd. at  
Normal Ave., NE  
corner

